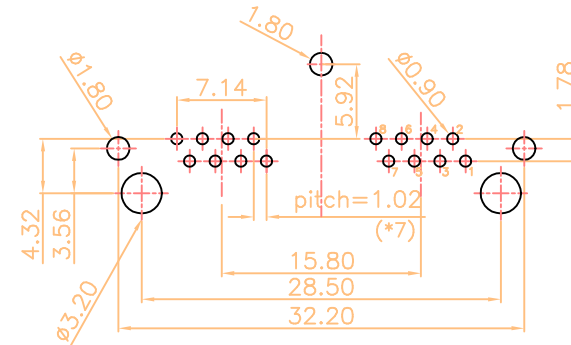
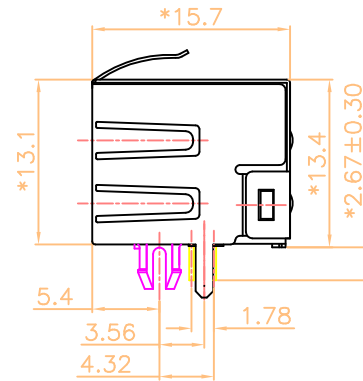
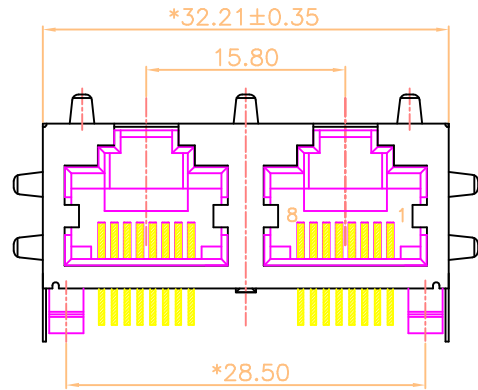
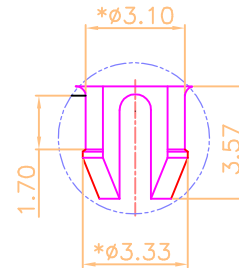




REVISION RECORD 修改紀錄					
REV	ECO	DESCRIPTION	DATE	DRFT	CHKD



PC Board Layout Component Side View
PC Board Thickness=1.6mm PCB TOLERANCE:±0.05



PART NUMBER: EL2J88-X6XAJXX

0-W/O LOGO

1-3u" 2-6u"
3-15u" 4-30u"
5-50u" F-GOLD FLASH

1-W/O TAB

B-NI SHIELD STAMPED PIN.
F-NI SHIELD ROUND PIN

2-W/ TOP TABS.

3-W/ SIDE TABS.

4-W/ TOP TABS AND SIDE TABS.

NOTES:

ELECTRICAL:

- VOLTAGE RATING : 125 VAC RMS.
- CURRENT RATING : 1.5 AMP.
- CONTACT RESISTANCE : 35 MILLIOHMS MAX.
- INSULATION RESISTANCE: 1000 MEGOHMS MIN @ 500 VDC.
- DIELECTRIC STRENGTH : 1000 VDC RMS 60Hz, 1MIN.
- OPERATING: 750 CYCLES MIN.

MECHANICAL:

- HOUSING MATERIAL : NYLON UL94V-0. /COLOR:BLACK.
- SHIELD MATERIAL : COPPER ALLOY.
- CONTACT MATERIAL : PHOSPHOR BRONZE t=0.35mm OR φ0.46mm.
- PLATING : GOLD PLATING OVER NICKEL.
- PCB RETENTION PRE-SOLDER : 1 LB MIN.
- PCB RETENTION POST-SOLDER: 10 LBS MIN.

ENVIRONMENTAL:

- STORAGE: -40°C TO +85°C.
- OPERATION: -40°C TO +85°C.
- WAVE SOLDERING TEMPERATURE: 250~260°C(3~5 SECONDS).
- RoHS COMPLIANT.

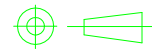
MATES WITH MODULAR PLUG CONFORMING TO
FCC PART 68, SUBPART F.
CUL FILE NO. E345295

單位: mm	DFTO: Rose	DATE: 2019.06.27
長度公差	角度公差	CHKD: Jerry
.0±0.25	φ±5°	APPVL: W.B.Huang
.00±0.15	脫模角:	顏色:
.000±0.10		MATERIAL:
		材質:
		TREAT:
		處理:
		QTY:
		數量:
		SCALE:
		比例 1:1

ELLAX CORPORATION

TITLE:
LED GANG JACK 1*2 W/O LED(W/ SHIELD)

DWG NO.	EL2J88-064AJFF	SIZE	REV
DRAWING NO:	EL2J88-X6XAJXX	A4	A
PART NO:			1 of 1



THIRD ANGLE PROJECTION